

Adventures with SeaTrac



Presenter: Alessandra Bianchi, Communications Director
February 23, 2022

Sustainable USV platform

Persistence, Power, Price

SeaTrac 

SeaTrac SP-48

- 4.8m
- Self-righting hull
- Near shore to open ocean operations
- Solar powered
- Collision avoidance
- Up to 500W max payload power

**One Platform,
Unlimited applications...**



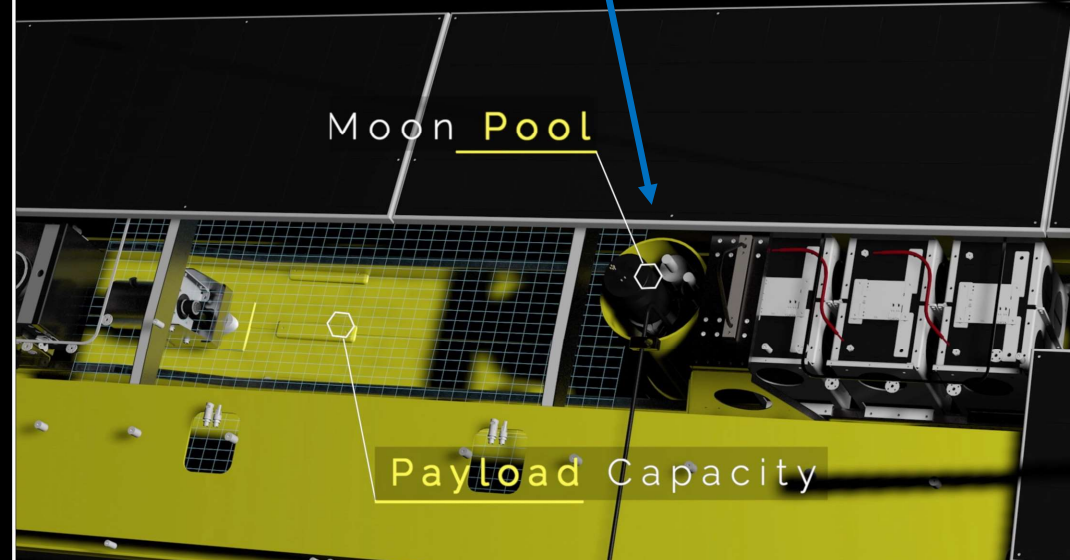
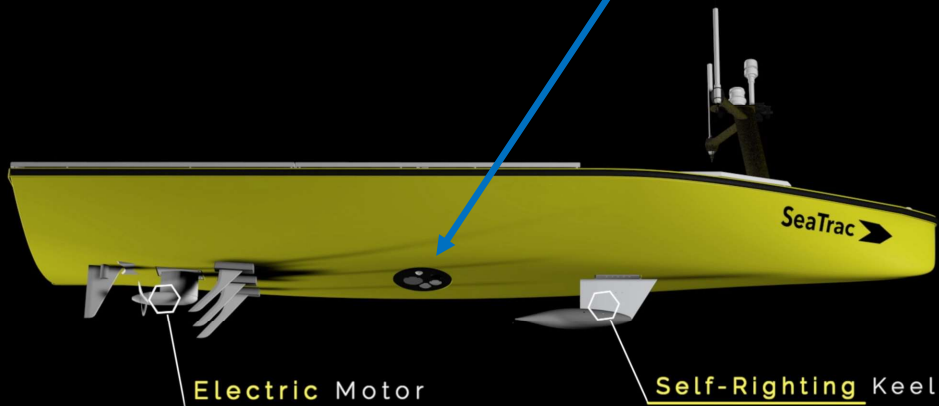
Jigger Herman & Buddy Duncan

One Platform: unlimited applications

Easily configurable with a wide variety of payloads

SeaTrac ➤

- Environmental Monitoring
- Hydrographic Survey
- Situational awareness
- Communications and Tracking
- Acoustics



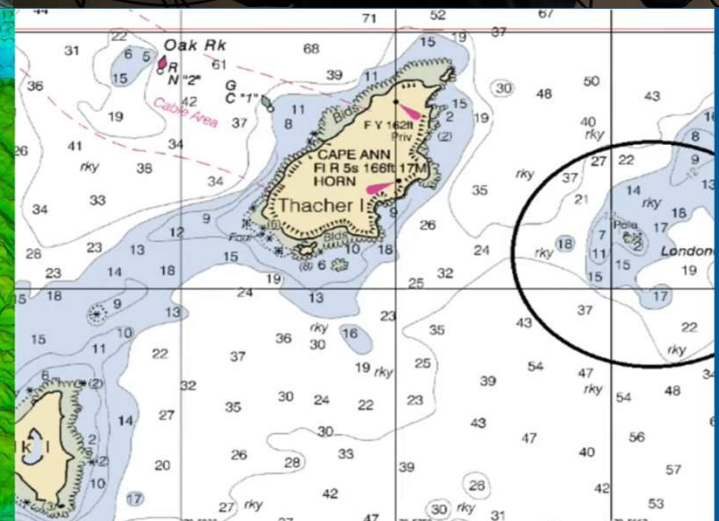
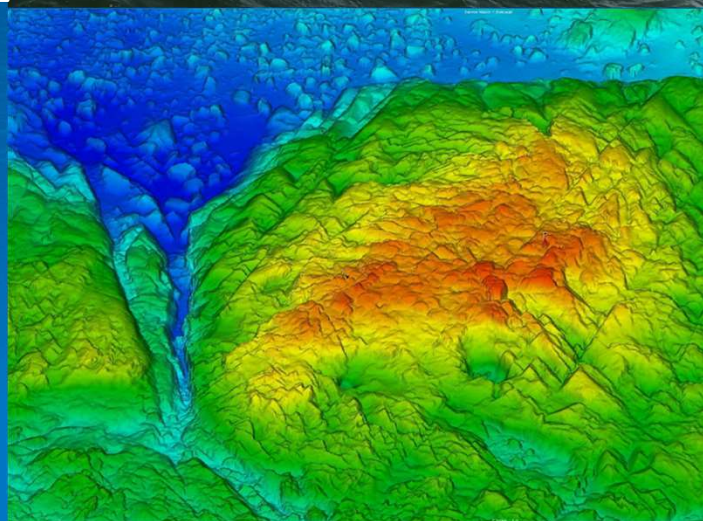
Hydrographic surveys

SeaTrac 



Sonar unit:
Norbit iWBMSH-N

Near shore, shallow,
cluttered environments
to open ocean

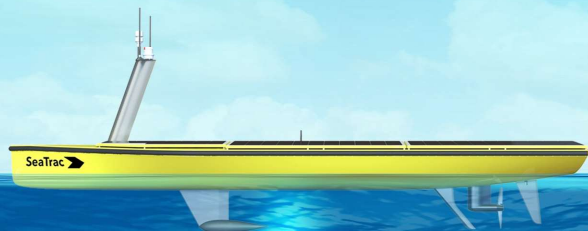


Eel grass mapping

Using aquatic habitat echosounder

SeaTrac 

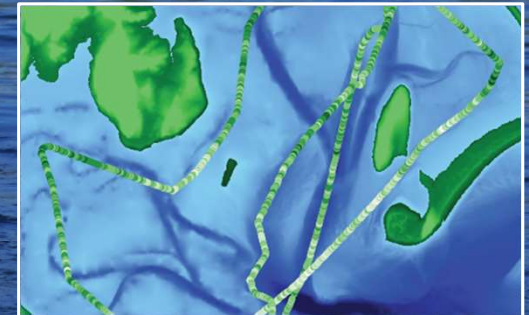
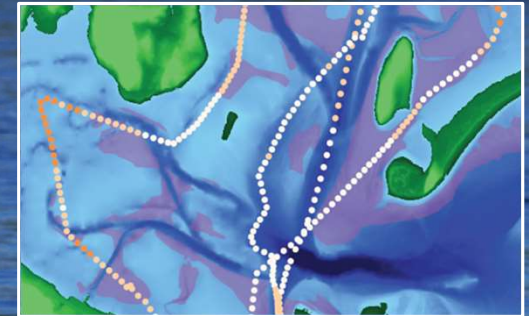
Sonar unit:
BioSonics DT-X Extreme



Water quality monitoring

Chlorophyll and turbidity data

SeaTrac 



Cutting-edge Agile Tech Survey



SeaTrac partners with USF, NOAA & Fugro in
Hydrographic Survey of Tampa Bay and Gulf of Mexico



A subset of multibeam bathymetry data (inset; depth in meters alongside color scale) collected in Blind Pass, Treasure Island, Florida, using an uncrewed surface vessel, or USV, by the Center for Ocean Mapping and Innovative Technologies (COMIT) and SeaTrac Systems during the Tampa Bay Nested Survey in December 2021 and January 2022.

What's next?

We are ready to assist in your next challenging mission:

- Shallow waters to open ocean
- Standard-to-custom payloads (including power hungry sensors)
- On-demand to real-time data

SeaTrac 

Alessandra Bianchi abianchi@seatrac.com 781-258-1440c

Ping Tuck Chai pchai@seatrac.com 781-732-4698c

Video by Eckerd College/Joe Salcedo